

Historic, Archive Document

Do not assume content reflects current scientific knowledge, policies, or practices.

41
-1930-

Greening's

LIBRARY
ACQUIRED
MAR 5 1930 ★
U.S. Department of Agriculture

SUN-GLO



The **PEACH**

of the **HOUR**

Special descriptive lists



GREENING'S BIG NURSERIES
MONROE ♦ **MICHIGAN**
BORN 1850 ~ **STILL GROWING**

Leading Fruit Growers Find Bud Selected Stock Best

Bartlett Pear

Heavy Bearing, Well Shaped and of Good Size

The Bartlett Pear records were started in 1917 in ten orchards, all of which had been planted in the Spring of 1912. The total number of trees in these orchards was more than 3,000. Careful records were kept in order to know exactly what was being done by the various trees under observation. We found, for example, that oftentimes a given tree in an orchard bore various types of fruit. One limb might carry the proper shaped Bartlett Pear, while another limb on the same tree would have fruit of inferior size, or it might be of round or Kieffer shape.

Not more than 20 feet away from the parent tree of our Super-Selected Aristocrat Bartlett, there stands a tree which produces quantities of Kieffer-shaped pears, yet this second tree is presumably a Bartlett. We set out to eliminate these undesirable characteristics by careful selection. Selection was made principally considering the factors of size, shape and form of fruit, as well as productiveness.

Out of the total of 3,000, the parent tree was selected because of its productiveness, the size of fruit is large, and it is the desired long shaped type. In other words, it is the Bartlett Pear as it should be. Our Bartlett Aristocrat is developed from this parent tree and carries these superior qualities. We have been able to eliminate the Kieffer-like characteristics and are able to offer you in this Super-Selection the highest type of Bartlett strain known.

Bud-Selected Montmorency Cherries

Another testimonial to the value of our Bud-Selection work as carried forward on Montmorency Cherries is shown herewith. Mr. Carne Tucker who has had long experience in fruit development, makes a most interesting observation when he reports in his letter, bud variations including an unproductive limb sport, late ripening limb sport and other characteristics. He points out the necessity for careful bud selection if you are to have trees of very best quality. If you want such trees we recommend to you Greening's Aristocrat Super-Selected stock of Montmorency Cherries,

Greening Nursery Company,
Monroe, Mich.

Gentlemen:—
I have been greatly interested in bud selection since Mr. Roy Gibson, of your nursery company, started observations in our Montmorency Cherry orchards in 1917. We have had a large acreage of cherry orchards and the actual limb sports and individual tree variations that he has located on our farms proves to me the need of careful selection of propagating buds.

Outstanding examples of these variations are an unproductive limb sport, a late ripening limb sport and a number of trees that have growth characteristics like sweet cherry trees and produce Montmerencies of small size. Your Fernwood Selection was made after five years of careful observations by Mr. Gibson from a block of 150 trees grown from an original selection made by Hon. W. W. Farnsworth, Waterville, Ohio. This block is remarkably uniform in tree growth and the size of the fruit averages large for the variety. The characteristics of this strain are strong, vigorous trees, heavy production and comparatively large sized fruit.

Your effort in behalf of the fruit grower is appreciated and we consider that we are working for our own interests when we co-operate with your Bud-Selection Department.

Sincerely yours,
CARNE TUCKER,
Bravo, Mich.

Bud-Selected—Larger and More Productive



PRESENTING our story of Bud-Selection Work and a statement of what we are attempting to do here at Greening's Nursery we have purposely left a large part of the discussion to men prominent in fruit growing and other horticultural work.

Our statements include letters from scientific men and from practical orchardists who have followed our work for many years. It is notable that many practical fruit growers who carefully follow our work become thoroughly convinced of the value of our research methods. We would like to have you write any of the gentlemen mentioned herein, or, if you prefer, write to others who have had experience with Greening stock. We are quite willing to abide by the answers you receive.

The Red Duchess

The parent tree of our Super-Selected Aristocrat Red Duchess shows color-type solid with slight indistinct stripes unlike the regular striped Duchess. Size and bearing qualities are like the Duchess. Flesh somewhat more firm in texture than ordinary Duchess.

Read Mr. Keister's letter and you will understand that our Red Duchess is really Red.

The Jonathan - Larger Fruit; Greater Yields

The parent tree of our Super-Selected Aristocrat Jonathan has made a showing of unusual worth. The record speaks for itself. Planting was made in 1914—records were started in 1918. Productions was as follows:

1918.....	22 Apples	1924.....	6 Bushels
1919.....	12 " "	1925.....	3 1/2 " "
1920.....	1 1/2 Bushels	1926.....	9 1/2 " "
1921.....	2 " "	1927.....	3 1/2 " "
1922.....	3 2/3 " "	1928.....	12 " "
1923.....	2 1/4 " "		

The usual criticism of the northern-grown Jonathan is the smallness of the fruit. In the case of this tree the records show the average size to be 6 5/8 ounces, with a yield of 38 1/4 bushels for eleven years. The best tree used as a check, planted at the same time under the same conditions, gave a yield of 14 1/5 bushels, and average size of 4.72 ounces per apple. By Bud-Selection we are able to offer this superior quality of Jonathan.

Fameuse—The Solid-Red Snow

Originally a limb variation noticed by Mr. Garfield Farley in his orchard of Snow Apples. He, considering it very valuable, top-worked a portion of this limb upon a younger tree which today is the parent tree of our solid red Fameuse strain. You will note again how "like produces like."

The fruit from this tree is solid color type, with no trace of striping. The bud was taken from that part of the tree which insured the production of Snow Apples of solid red color only. The advantage of this work is obvious. By bud selection work we are thus able to offer you something which is superior and which we know is true to type. It will pay you to investigate in careful detail this Bud-Selection work.

Rhode Island Greening

The production of the parent tree in the case of our super selected Aristocrat R. I. Greening is remarkable in that the tree started to bear at one year old and continued production during the same time the tree was making rapid growth. Early bearing is but one of the virtues which we have been able to develop in this variety through Bud Selection work. It is true to type and will give you superior production.



SO RED DIDN'T THINK IT WAS A DUCHESS

Gentlemen:—
It was some six or seven years ago that I noticed this Red Duchess tree in our Duchess orchard. And in particular, five years ago this tree was loaded as well as the rest of our orchard and we had our pickers at work and as the writer was not present when they got to this tree they left it unpecked, thinking that it was some other variety.

The apples on this tree always color a perfect red while all the rest of our Duchess are striped.

H. A. KEISTER,
Bangor, Mich.

Come and See Us

The details concerning our development of Aristocrat Super Selected stock cannot be covered in a circular such as this. In fact, it would take a huge book to tell the story in detail of what we are doing. We suggest, therefore, that you visit our office if you have opportunity or if you are in Western Michigan visit Mr. Roy Gibson of South Haven. All we ask is that you investigate our work. We believe that results speak for themselves.

An Elberta Aristocrat

With the Abundance of Color Which Sells Fruit

When planting an Elberta Orchard, why not plant the best. Many growers have noticed that some trees in their Elberta orchards bear better colored fruit than others. Also there is a variation in the yield. In Bud-Selected stock alone can you be assured of Elbertas exactly as you expect them to be. This Super-Selected Aristocrat strain, which is put out by The Greening Company, has behind it most scientific and most carefully guarded Bud-Selection work, which gives you a heavy bear Elberta of wonderful color.

The parent tree from which our Elberta Aristocrat stock is propagated, is a tree which was set out in the year of 1918 in an Elberta orchard. These trees were budded from the orchard of F. H. Luplow, during the Summer of 1916, continuing the Greening strain of early bearing, heavy producing Elberta. This Super-Selected tree was chosen after very careful study and careful record keeping. The parent tree at ten years of age measured 30 feet across, bears from six to ten bushels of large sized Elbertas each year, and is free from disease. Bud-Selection from this tree has given us the Aristocrat strain of Elberta, in which you may put complete dependence.

A Leading Elberta Producer says:

Greening Nursery Co.,
Monroe, Mich.

Gentlemen:—
I am glad to take this opportunity of stating my appreciation of the work your Mr. Gibson is doing along the line of selecting the best trees of a variety from which to continue the variety. It has always been a very evident fact to an observing fruit grower that there is a wide variation in yield, quality and other characteristics among nearly every group of trees of a certain variety. Propagation from some of these trees is sure to cause a great disappointment to the individual who is unfortunate enough to purchase the resulting nursery stock. For example, Mr. Gibson has had under observation one South Haven tree on our farm, which ripens about one week later than the other trees of the same variety around it. Trees propagated from this individual would be very undesirable as the fruit would be ripening in the Elberta season. Upon the other hand, he has been keeping a record of a certain Elberta tree on the farm that is outstanding for large production of high quality fruit. I have every reason to believe that this latter tree is a very valuable individual from which to select buds to maintain the standards of the Elberta variety. I am more and more convinced that certain good varieties have "run out" because nurserymen have not been careful in selecting trees of the highest type for the variety from which to cut buds.

It is for this type of work that I desire to commend your representative, Mr. Gibson, and I feel that all fruit growers owe The Greening Nursery Company a large debt of gratitude for conducting such a valuable department for the benefit of all concerned. I wish you continued success and am glad to offer you every co-operation it is possible for us to give you. Very truly yours,
FLOYD M. BARDEN,
South Haven, Mich.



Bud Selected—A Higher Colored Elberta

**Plant GREENING'S ARISTOCRATS
And You Will Write a Similar Letter**

No Boarders IN **BUD-SELECTED** **STOCK**

Every Tree a Money-Maker

As there is constant deterioration within varieties of fruits even to the extent that some of our once popular commercial varieties have run out, Bud-Selection is essential, not only to prevent deterioration, but to actually get marked improvement by selecting buds from the best performers in a given variety.

The history of the development of our commercial fruit industry may be written in terms of the passing of old and the introduction of new varieties. The appearance of a superior new variety may remake the horticultural map of the country, and at the same time, "make" or "break" the individual fruit grower. The man who raises Rambos or Yellow Bellflowers in the age of the McIntosh and Northern Spy is doomed to failure. Similarly, he who grows a strain of a standard sort superior to the average or general run of that variety possesses a distinct advantage over his competitor.

Variations within the variety are of common, even universal occurrence. Some of these are plainly due to environment and cannot be perpetuated; others are in the nature of true bud mutations and can be propagated. We have been searching for variations of this latter type for years and have located a number that we are convinced are distinctly superior. These we have propagated and the trees are now offered for sale. In some cases these strains represent a distinct improvement over the variety as originally introduced and commonly propagated—an improvement that might, with propriety, be given a new variety name, though we have not chosen to designate our improved strains in that way. In other cases these strains simply represent what we consider the best or ideal type of the variety, superior to the general run in the fact that the "general run" often constitutes a mixture of more or less inferior strains that inadvertently have been propagated along with the standard or ideal type. In any case the field observations that we have made and

the performance records that we have obtained lead us to believe that we are offering to the trade, stock that is the very best obtainable.



Mr. Roy Gibson, head of the Greening Research Department, is responsible for this work. Regarding the Greening Research Work, Stanley Johnston, Superintendent of the Michigan State College South Haven Experiment Station, writes as follows:

"I heartily agree with you in your opinion of Roy Gibson's work. I regard him very highly as a man and as an investigator. In the orchard, I believe he is the keenest observer I have ever met. I think that we should not overlook the fact that one of the most important features of his work is that he is holding varieties true to their original standards. I am convinced that random selection of buds will result in the propagation of degenerate types. If the prospective grower can be assured of getting our standard varieties exactly true to type and true to name he should feel well satisfied."

Shown above is picture of a South Haven Peach tree at the South Haven Experimental Station which literally failed as a producer. This was true in spite of the fact that it is a tree of standard variety. Such failures are eliminated by Bud-selection work and we know of no other method by which they can be kept out of the orchard.

The above expresses exactly the thought behind leading research. True to type and true to name, through buds selected from stock which is known to be as such.

The Solid Red McIntosh

Pure-Blooded Red Strain

The parent tree of the solid red McIntosh is on the farm of Farley Brothers, at Albion, Mich. Our records on this tree were started in the Summer of 1923. Observation has shown only solid red color on this parent tree and it is the only McIntosh tree which we have studied for five years or more, that has not shown any trace of mixture. Buds were taken from this tree in July of 1925 and 1926 and have been placed in the Scion Nursery of the Greening Nursery Company. This is the parent tree of the solid red McIntosh of the future.



Hyslop Crab—Much Larger Fruit

The parent tree was planted in 1913 and is a vigorous specimen. Our records show heavy annual bearing, a total for nine years, ending 1928, of 593¼ bushels. Fruit is large size, averaging 1⅞ oz. each; color solid red type, slightly mixed with indistinct stripes. The value of the Greening System of Bud Selection is illustrated in this parent tree selection. By propagating from this tree, which we know possesses the desired commercial factors, we are eliminating the undesirable variations, which we know are present in many trees of the Hyslop variety.

Northwestern Greening

Tremendous Yields

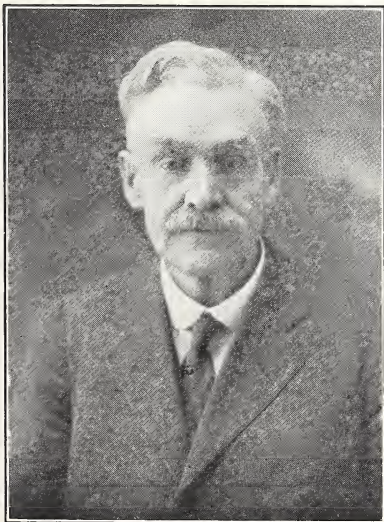
Bud selection here again enters in to improve the strain offered in this variety. The parent tree of Greening's Super-Selected N. W. Greening is the highest producing tree of any which has come under our observation. Planting was made in 1905. No records were kept for the first ten years. Production records from that date on are as follows:

1919.....	18	Bushels
1920.....	10½	"
1921.....	10	"
1922.....	19	"
1923.....	15	"
1924.....	35	"
1925.....	23	"

Total 130½

Average size specimen fruit 10 1-3 oz.

We believe the above record speaks for itself and should recommend to you Greening's N. W. Greening Super Selected stock.



James Nicol,
Former
President
Michigan
Farm
Bureau.

McIntosh Taken Only from Solid Red Parent Stock

The Greening Nursery Co.,
Monroe, Michigan.

Gentlemen:—

I have been here on the Pennville Farm of T. S. Smith of Chicago since 1913. For 10 years Roy Gibson, of your Research and Bud-Selection Department has been coming each season in connection with this work. He has made two parent tree selections, Hyslop Crab Apple Tree No. 1, and Northwestern Greening Tree No. 3.



Since 1924 he has made color observations and records in our McIntosh block of one hundred eight trees. Over one-half have produced only striped apples each year. About forty produce the more desirable solid red McIntosh apples, with an occasional striped one or a limb of striped fruit. Propagation buds were only cut from the solid red sections of these trees.

If I were to plant an orchard of my own, I would plant Greening's Super-Selected trees. I think the idea of cutting buds only from trees that are known to be desirable is right.

Yours sincerely,

(Signed) HERMAN ONKEN.

Bud Selection Has Attracted Attention of Leaders

Go where you will among orchardists or among scientific men in the horticultural work and you will learn much concerning Greening's Bud-Selection work. We might present a great deal more evidence than is shown in this folder. However, we feel that sufficient is said here to create an interest on your part at least. We want to, however, quote a letter from James Nicol, former President of the Michigan Farm Bureau. Mr. Nicol expresses clearly and in few words a sentiment that has been echoed by hundreds of fruit growers throughout the country. Mr. Nicol's letter is as follows:

Messrs. Greening Bros.,
Monroe, Michigan.

Dear Sirs:—

I have been very much interested in the work your Mr. Roy Gibson has been doing in selecting trees true to type, color and productivity, and realize the years spent and careful records that he has made to secure proper results on the breeding.

You are to be congratulated on having a man willing and competent to do such a long, tedious work.

As an orchardist I would consider your selected strains of nursery stock to be of greater value than can usually be obtained.

Very truly yours,

JAMES NICOL,
South Haven, Mich.

Greening's

SUN~GLO

Peach

How the SUN-GLO Tree was Selected

The South Haven variety of Peaches was originated from an outstanding tree found in a Peach orchard of St. John variety located on the farm of A. G. Spencer & Son, of Kibbie, Mich. The original tree, without a doubt, was the result of a bud sport from the St. John variety. The new variety ripened with St. John, ten days or two weeks before Elberta, at a time when the market was not supplied with Peaches and when the price of Peaches was high. Unlike St. John, the tree proved hardy in bud and a wonderfully dependable bearer. Records show the size of the fruit to average equal to Elberta but the quality is better. In a very short time since the variety was introduced by The Greening Nursery Company, hundreds of thousands have been put out in orchards and it has gained recognition as a leading money-making commercial variety.

The Sun-Glo variety is a super-Selected South Haven, being propagated from South Haven Tree No. 20, A. G. Spencer & Son, Kibbie, Mich. This tree No. 20 is one of the first fifty-two coming from the first cutting of buds from the original South Haven tree, and located in a row forty feet north of the original.

Experiment Station Superintendent says: "This Fine Variety as It Should Be"

Mr. Stanley Johnson, Superintendent of the Michigan State College, South Haven Experiment Station, has written us as follows regarding the Sun-Glo Peach:

"I am familiar with Mr. Gibson's South Haven Tree No. 20, at the A. G. Spencer farm. In my opinion it is a very fine tree of South Haven and is true to type. I do not consider it an improved South Haven. It is just that fine variety as it should be.

I will say that there has been some evidence to show that the South Haven has produced at least two bud sports. Considering this fact, the sensible thing to do would be to select buds from a tree like Mr. Gibson's No. 20, in order to be certain of obtaining the original South Haven variety.

Very truly yours,
Signal—STANLEY JOHNSON, Supt.

When you order the Sun-Glo Peach you are ordering these selected from a Spencer Tree No. 20 stock, such as Mr. Johnson tells about in his letter above. You will make no mistake if you follow the recommendation which Mr. Johnson has made, and order the Sun-Glo Peach.

Selected from Known Parent Stock

Greening's Super-Select Baldwin One of Greening's Aristocrats



Everyone knows the value of the Baldwin apple, when trees produce true to type and true to name. It is a leading variety for commercial orchards and has done as much as any one variety of apples to bring profit and financial returns to the commercial fruit grower. In this variety, we again have applied the most careful scientific bud selection principles and as a result have stock with strong tendencies to early bearing and annual bearing. In 1908, Baldwin tree No. 2 was planted on the A. G. Spencer farm at Kibbie, Michigan. The record of this tree is shown in the following table:

Year	Bushels
1916	4
1917	2 1/2
1918	7
1919	15
1920	13 3/4
1921	29
1922	29
1923	26
1925	25
1926	12
1927	16
Total	150 1/4

Through bud selection work we developed from this parent tree, our Baldwin tree No. 5, which is on Farley Brothers farm, Albion, Michigan. This tree was set in 1923, and in 1929 fruited 15 apples. A picture of the tree is shown herewith and the apples are plainly evident on this young specimen. This shows the superiority of the bud selected Baldwin Aristocrat stock which we now are offering in limited numbers. It is more than worth the money.

The Greening Nursery Co.,
Monroe, Michigan.

Gentlemen:

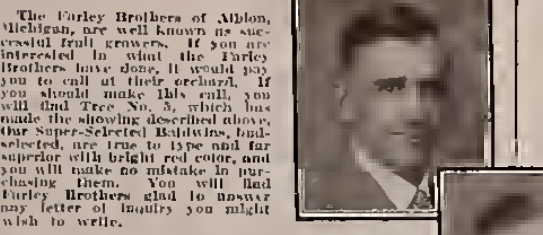
We have used over two thousand of your apple trees in the last twenty years and have been more than pleased with their performance. Since your super-selected stock has been for sale, we have been getting some every year and they promise to be far ahead of ordinary trees.

Five years ago last Spring we planted 50 of your super-selected Baldwin-Spencer strain. We knew what you were doing along this line and expected a lot from them, but were agreeably surprised when a large per cent of them blossomed this year and set a nice lot of apples.

These trees made a remarkable growth so even and thrifty with fine shaped heads and the fruit on them now is of such uniform size and shape and such rich color that we want to pass the word along to anyone that plans to set a Baldwin orchard.

We also planted one hundred super-selected Northern Spy trees six years ago last Spring but now show a nice scattering of fruit, some six to eight highly colored fine shaped specimens in ten years of age they will be bearing profitable crops.

Very sincerely yours,
FARLEY BROTHERS,
Albion, Michigan.



Farley Brothers and Baldwin Tree No. 5 Which Bore at 5 Years of Age.

The Result of Careful Bud Selection



If you want to get on the market early, ten days to two weeks ahead of the Elberta, while the price is still high; if you want a Peach which is rich in coloring, which grows large and into a fine specimen, if you want a Peach popular with the home trade and with the commercial market, then you should buy the Sun-Glo.

The Sun-Glo has made unusual showing where Winter conditions are severe, where trees of other varieties failed to withstand the Winter or were badly crippled by adverse weather conditions the Sun-Glo trees came through in good condition. With buds that withstand heavy Winter weather the Sun-Glo is the surest bearing Peach we know about.

Outstanding Among Peaches is the "SUN-GLO"

It has rightfully been called the "Peach of the Hour." Practical growers and scientific men are in accord in the statement that the Sun-Glo has unusual merit. It is a large Peach, well shaped, and is beautifully colored. The meat is firm and yellow, without red pit stains. The skin is firm, which insures good shipping quality. These points give first choice on the market and also as a canning Peach. The grower with Sun-Glo to offer has no difficulty in disposing of his product, at a price which is more than satisfactory.

U. S. Department of Agriculture Endorses BUD-SELECTION

Greening Nursery Co.,
Monroe, Michigan.
Gentlemen:—

Our experience is directly confirmatory of yours and we have much additional evidence, both scientific and commercial, as to the fundamental importance of bud selection.

(Signed) A. D. SHAMEL,
U. S. Dept. of Agriculture,
Bureau of Plant Industry.



The above photograph shows Roy Gibson, head of Greening research, and Dr. Brooks B. Brain, employed by the Michigan Agricultural Experiment Station, and who has spent two seasons checking our research work in developing Bud-Selected stock at The Greening Nursery. Dr. A. D. ShameL, of the United States Department of Agriculture, is another authority attracted by the careful scientific work done by Greening's. His conclusions are given in the letter shown herein.

Greening Research

Selects Parent Trees with Money-Making Value

Greening's research is applied to all leading commercial varieties of deciduous tree fruits. Our aim is to grow trees that are not only "true-to-name" but that have inherent money-making capacity. Super-Selected trees are trees grown from a "Parent Tree" known, because of actual performance records, to possess the desired money-making characteristics of the variety.

LUTHER BURBANK

Luther Burbank, during his lifetime, was acknowledged to be the leading scientist in the propagating of new varieties and in the maintaining of old varieties to high standards. His unqualified support of bud selection work is significant. His letter, which is reproduced herewith, was written shortly before his death and, we feel, is recognition of the work which the Greening Nurseries has under way, and have had under way for many years. In our nurseries and in the field we are carefully following the principles of bud selection work indicated in Luther Burbank's letter. We are ready now to offer a LIMITED NUMBER of bud selected trees in leading varieties. There can be no question about the superiority of this type of tree and we stand behind this work without qualification. Fourteen years of careful study has convinced us that bud selected trees can be offered with absolute assurance. When Greening's bud selected stock comes into bearing, you will not be disappointed. You will find that you have trees which exactly live up to their name and bear plentifully of fruit which is true to type.



Mr. Edward G. Greening,
Greening Nursery Company,
Monroe, Michigan.

Dear Sir:—
The matter of bud selection is receiving a great deal of attention in California with the more progressive, intelligent and honest nurserymen. It is only a matter of education when all fruit growers will select their trees from a nursery which selects their buds with care and discernment.
Signed, LUTHER BURBANK.

Just What is BUD SELECTION?

Propagation of trees for commercial orchards has been based upon the supposition that varietal characteristics are fixed. If that were true there is no reason for "Bud-Selection" except to keep varieties true to name.

Since starting Research and Bud-Selection Records in 1917 in co-operation with many of the best fruit growers in Michigan, we have accumulated a mass of evidence that proves the existence of variations between individual trees and we have charted and recorded hundreds of actual limb variations which account for the difference in the trees. We have abundant evidence to show that variations occur in our deciduous fruit trees in each of their factors. This includes the type and vigor of trees, and branches; differences in color, shape and size of leaves, time of blossoming and fruiting; many factors that affect production, including the setting of fruit buds and of pollenization and in the size, shape, color and quality of the fruit itself.

The Greening system of Bud-Selection is an honest effort, first to maintain or restore our standard varieties to their original high state of efficiency or money making capacity by selecting, from actual records, a parent tree that has the good qualities which we wish to reproduce. By propagating from this "good" tree we KNOW we do not grow trees from those that have deteriorated. Thus we eliminate the undesirable variations.

The second object in the Greening system of Bud-Selection is to improve or perfect our good varieties, to more fully meet the need of our present day, exacting market conditions. We do this by selecting buds from the variations or sports that possess some factor that is an improvement over the original variety, or at least over the general run of trees of that variety as found in commercial orchards.

College Authority Writes He is

"Convinced of the Value of the Work"

Scientific men are beginning to recognize the fact that the work being done by Greening's is something of real value. We quote from a letter from the head of the Horticultural Department of one of the leading State Agricultural Colleges. He writes as follows:

"The more I have thought about the many things that you brought to our attention last week-end, the more I am convinced of the value of the work which you are doing. You are doing a constructive piece of work of far-reaching significance. It may take a little time to convince some of the skeptical that this is the case but the way the evidence is accumulating and taking shape, I believe that sooner or later the most skeptical will have to admit that fundamentally you are correct."

One of Greening's Aristocrats

Greening's Super-Select Northern Spy

Bud-Selected from Superior Stock—Bears Early

This Super-Selected Aristocrat stock is an example of Bud-Selection carried forward from a long period of years. In 1905 Mr. Cook bought and set out an orchard of Northern Spies, which were from young wood of trees of superior quality. One tree of this orchard was of outstanding quality and attracted favorable attention. Because of this fact, the first crop was picked in 1912, seven years after the orchard was set out. By the time the orchard was ten years of age, the Greening Aristocrat parent tree had advanced to the point where it yielded six bushels. This same tree yielded 13 bushels twelve years after it was set out, and this parent tree has been used to propagate the Super-Selected Aristocrat strain, because of its early bearing tendency. The tendency of the variety is, of course, toward late bearing, but by using our Bud-Selection knowledge and ability, we have been able to overcome this defect.



Bud Selection for 26 Years

Greening Nursery Company,
Monroe, Mich.

Gentlemen:

Personally I have been sold on the "Bud Selection" principle since we began to grow fruit in the early nineties. Dr. L. H. Bailey presented the idea in strong terms in his classes at Michigan State College, and since leaving College we have been on the look out for desirable sports.

Twenty-six years ago we bought apple trees for a new orchard of a man in New York who at that time was selecting his young wood from trees of superior qualities.

Very respectfully yours,
CHARLES B. COOK.

Route 1, Owosso, Mich.



One of the outstanding fruit producers is Mr. Charles B. Cook, of Owosso, Michigan. Mr. Cook has had ample scientific training and years of experience in his own orchards. His co-operation in helping us to produce this superior Bud-Selected stock is much appreciated. In our years of work in Bud-Selection, we have found only a few fruit growers who have practiced Bud-Selection and Mr. Cook is one of these men, and he has profited therefrom.



Charles B. Cook and Parent Northern Spy Tree.

GREENING'S...BIG...NURSERIES

Born 1850 MONROE, MICHIGAN Still Growing

627



PRICES OF Greening's Super-Selected Variety Strains



FEB 7 1930

SPRING 1930 DELIVERY

TERMS AND CONDITIONS—We prepay the freight and make no charge for packing. Our usual guarantee applies. Terms are cash on delivery.

SPECIAL DISCOUNTS—A discount of 10% for cash with orders received before Feb. 1st, 1930. A discount of 8% for cash with orders received before March 1st, 1930. A discount of 5% for cash received with orders before May 1st, 1930. Cash must accompany orders after March 15, 1930. Prices are subject to change without notice.

As our supply of these trees is limited, we must limit our sales to the stock we have on hand upon receipt of orders. Please make your reservations for fruit trees without delay and thereby avoid disappointment.

Super-Selected Strains of Budded APPLE TREES

Carefully Graded

	Ten Rate	Hundred Rate
2 yr old XXX size, 11-16" caliper and up, 5'-7' -----	\$7.50	\$55.00
2 yr old XX size, 9-16" caliper, 4'-6' -----	6.00	45.00
2 yr old X size, 7-16" caliper, 3'-4' -----	5.00	35.00
1 yr old Whips, 3'-5' best size only -----	6.00	40.00

No less than ten of one variety at these prices. Fifty trees of one variety at One Hundred rates.

We have the following varieties, Super-Selected Strains, at the present time:

XXX Size-Fameuse (Snow) Red Duchess
 Hyslop Red Stark
 McIntosh Turley Winesap
 Northern Spy

XX Size-McIntosh Gallia Beauty (Red Rome)
 Northern Spy Turley Winesap

X Size-McIntosh Gallia Beauty (Red Rome)
 Northern Spy

Yearlings - Baldwin
 Delicious
 Fameuse (Snow)
 Gallia Beauty (Red Rome)
 Grimes Golden
 Hyslop
 Jonathan
 McIntosh
 Northern Spy
 N. W. Greening
 Red Duchess
 R. I. Greening
 Red Stark
 Turley Winesap

Super-Selected Strains of PEAR TREES

3 5' 1 Year Old Only (All 2 Year Old Sold)

	Ten Rate	Hundred Rate
✓ Bartlett -----	\$6.00	\$45.00

Super-Selected Strains of CHERRY TREES

XXX 2 Year Old, Montmorency -----	9.00	75.00
2 Year Old, Richmond -----	8.00	60.00
1 Year Old, 7-16" caliper, 2½-3', Montmorency -----	6.00	50.00

Super-Selected Strains of PEACH TREES

XXX Size 9-16" caliper and up, 4-6' -----	5.00	30.00
XX Size 7-16" caliper, 3-5' -----	4.00	25.00
X Size 5-16" - 7-16" caliper, 2½-3½' -----	3.00	20.00

The New Sun-Glo (Improved South Haven) is 5c more in all sizes.

Super-Select Varieties: Elberta, J. H. Hale, Dewey. All XX size of J. H. Hale are sold out.

The Greening Nursery Co.
Monroe, Michigan

Born 1850

Still Growing



